

new
energy
ideas



alternative alternative energy



128 years after Edison invented the light bulb, the world is
ready for a clean, creative energy solution
to light the way for a new generation.

alternative alternative energy

idea book

alternative alternative energy
2007

Moth Generator



Using the innate attraction of moths to light, the Moth Generator creates electrical current from the movement of magnetized moths past conductive coils.

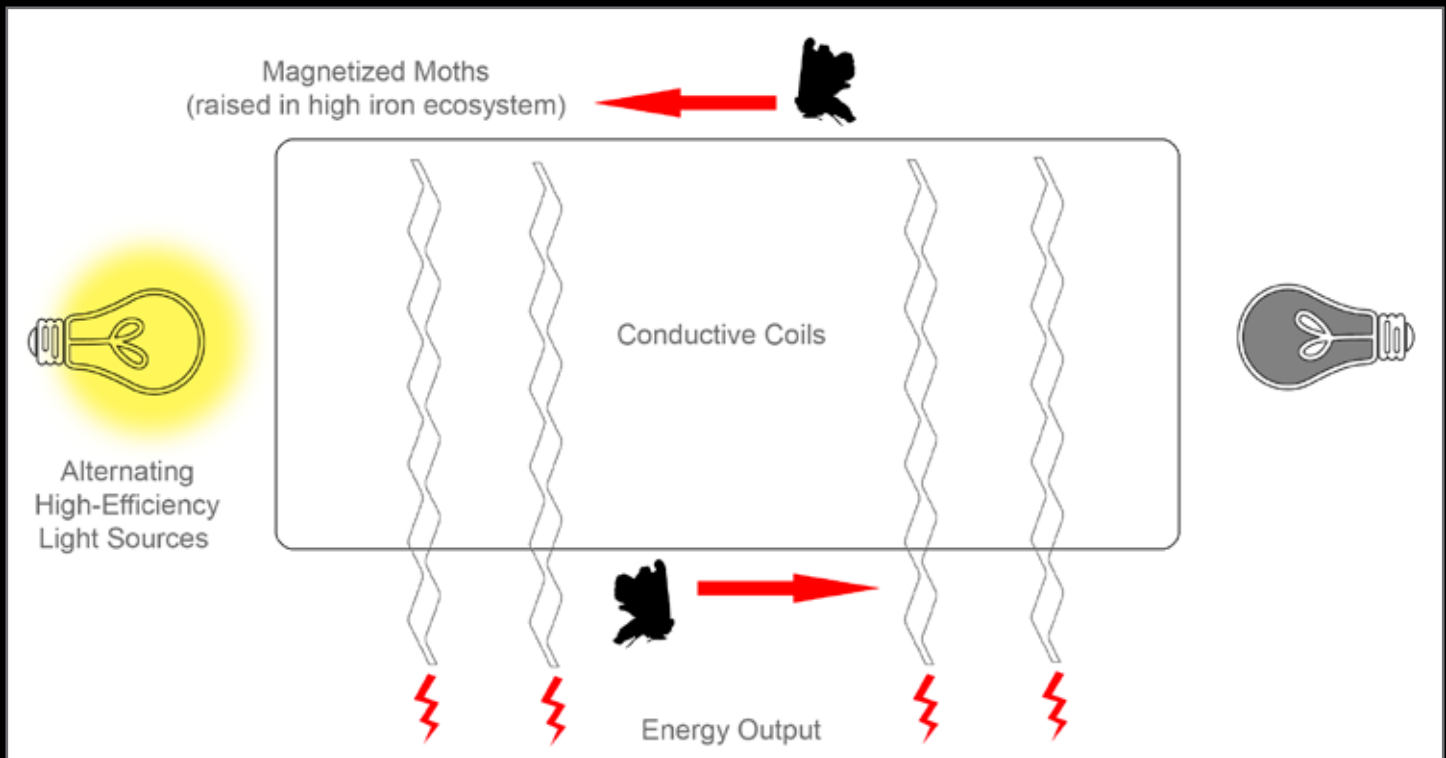
A single moth creates only a small charge, but thousands of moths flying together create a significant output.



▲ MOTH.01 Satellite image of proposed location in Albuquerque, NM.



MOTH.02 Model of the Moth Generator in site. ►



▲ MOTH.03 Diagram of Moth Generator technology.





MOTH.05 Early moth power design
concept utilizing a single moth.

Energy Ice Worm Fuel

Energy ice worms are specially bred to consume methane ice, a solid form of natural gas that exists in deep ocean sediments at high pressure and low temperature.

When harvested and refined, the worms create a biomass fuel suitable for combustion engines.



EIW.01 Burning methane ice, under laboratory conditions. ►

Methane Ice, also known as Methane Clathrate, only exists in solid form under high pressure and low temperature conditions, such as those found deep under the ocean floor.



◄ EIW.02 Energy Ice Worm technology was tested in methane ice deposits in the Nansha Trough area of the South China Sea.

EIW.03 EIW.04 EIW.05 Energy ice worms are delivered to deep ocean methane deposits using torpedos.





▲ EIW.06 EIW.07 EIW.08 Spontaneous worm liquefaction during harvest from ocean depth. Ocean pressure simulation 403 decibars, 201 decibars, and 0 decibars.



◀ EIW.09 Refined Energy Ice Worm (EIW) Fuel

IN

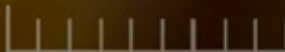
E 111

00:01
01/01

EIW.10 Immature energy ice worms.



DEPTH 444 M



Bat Generator



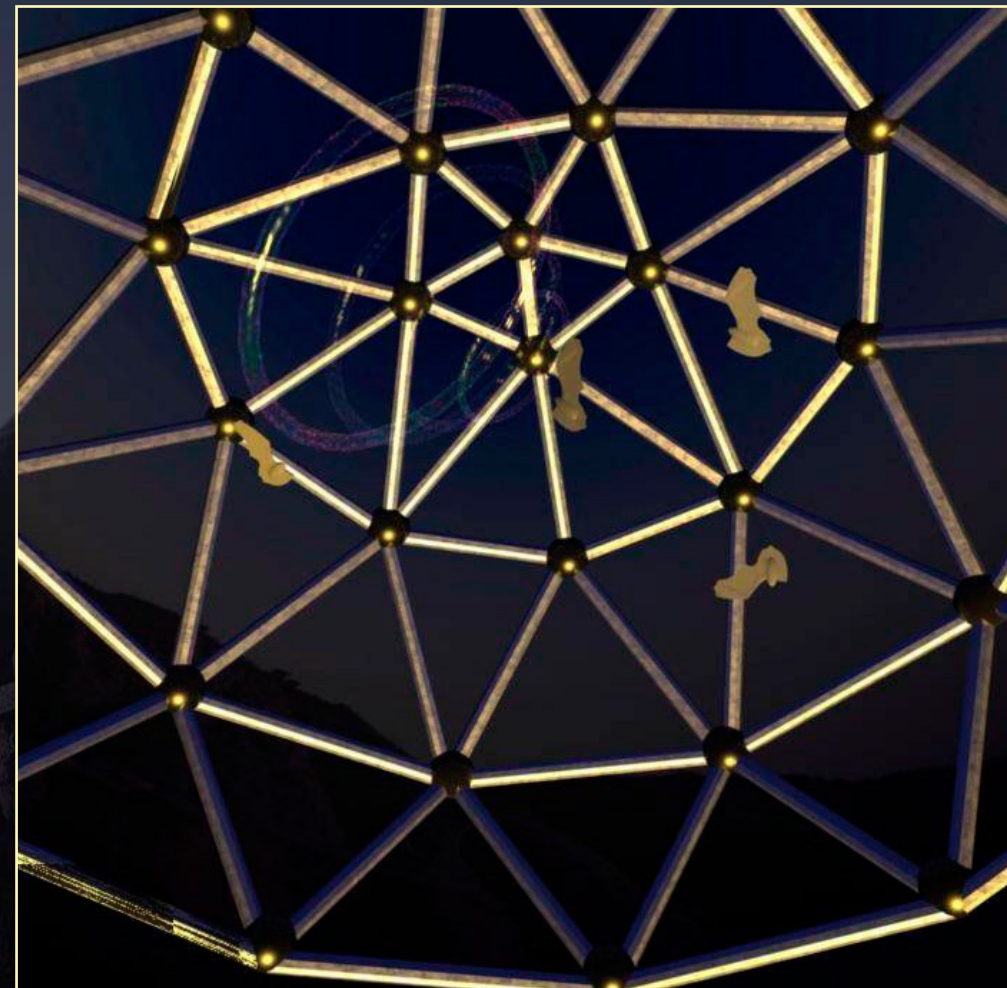
The Bat Generator converts the sound energy of bat echolocation into electrical energy.

The design was tested in Carlsbad, NM, but is applicable to other areas with large bat colonies.



◀ BAT.01 Satellite map of modular bat generator units.

▼ BAT.02 Sound collection units in bat feeding grounds in the New Mexico desert.



BAT.03 Visualization of bat echolocation being collected by nodules on the dome framework. ▶

BAT.04 Bat generator prototype being tested in Dalian, China.



Sea Cucumber Methane Recovery

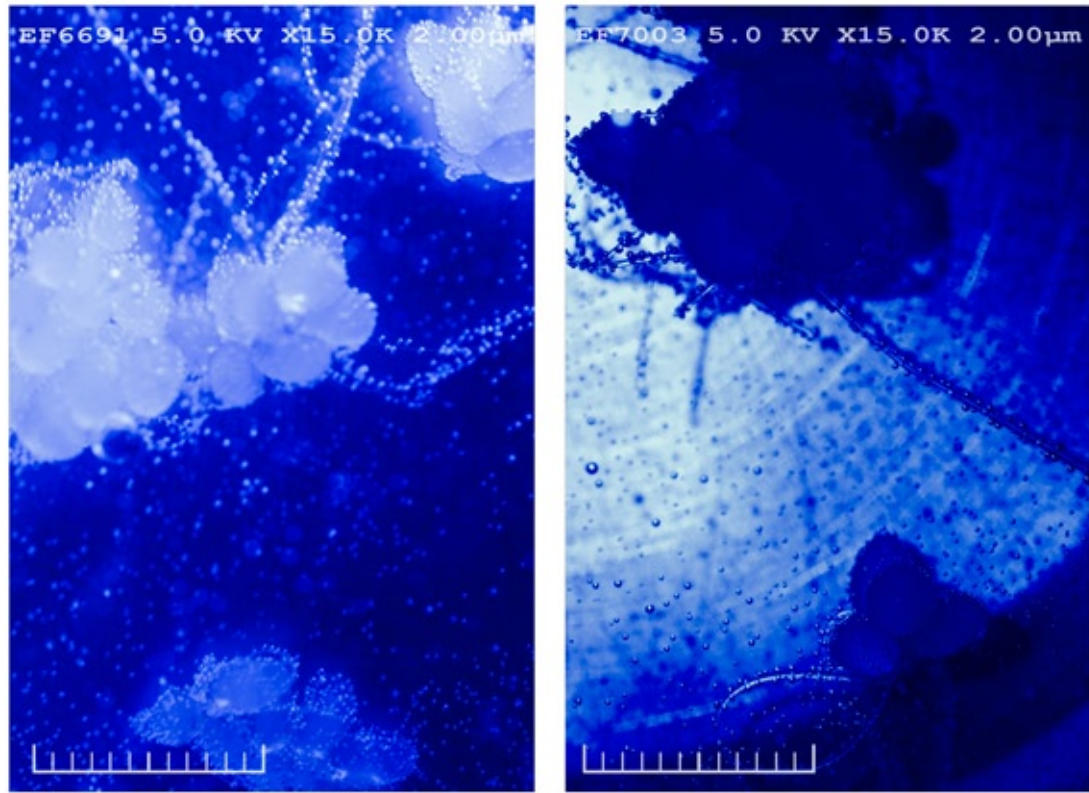
Methane recovery from small mines is often absent due to costs, resulting in dangerous buildup and environmentally damaging release into the atmosphere.

Bringing a self-contained methane-fed ecosystem to small coal mines creates a novel method of methane capture while providing a lucrative crop of sea cucumbers.



SCMR.01a (Insert) Diagram of methane recovery system.

SCMR.01b Coal mine in Datong County, Shanxi, China.



▲ SCMR.02 SCMR.03 Symbiotic methane-consuming bacteria in the sea cucumber gut assist in obtaining essential nutrients.

SCMR.04 Specially bred deep ocean sea cucumbers provide enhanced flavor and health benefits. ►



List of Images

Moth Generator

- MOTH.01 Satellite Image, Archival Pigment Print, 30"x30"
- MOTH.02 Model In Site, Archival Pigment Print, 30"x54"
- MOTH.03 Moth Generator Diagram, Flash Animation, variable dimensions
- MOTH.04 Magnetized Moth, Archival Pigment Print, 40"x30"
- MOTH.05 Single Moth Generator, Archival Pigment Print, 30"x40"

Energy Ice Worm Fuel

Energy Ice Worm Video, 2 minutes 50 seconds, variable dimensions

- EIW.01 Burning Ice, Archival Pigment Print, 40"x30"
- EIW.02 South China Sea, Archival Pigment Print, 30"x40"
- EIW.03 Ice Worms Feeding, Archival Pigment Print, 30"x40"
- EIW.04 Ice Worm Delivery Torpedos, Archival Pigment Print, 30"x40"
- EIW.05 Worm Release, Archival Pigment Print, 30"x40"
- EIW.06 Worm Liquefaction, Archival Pigment Print, 16"x20"
- EIW.07 Worm Liquefaction, Archival Pigment Print, 16"x20"
- EIW.08 Worm Liquefaction, Archival Pigment Print, 16"x20"
- EIW.09 Refined EIW Fuel, Archival Pigment Print, 30"x40"

Bat Generator

Bat Generator Video, 3 minutes, variable dimensions

- BAT.01 Satellite Image, Archival Pigment Print, 30"x30"
- BAT.02 Still from Bat Generator Movie, Archival Pigment Print, 30"x40"
- BAT.03 Still from Bat Generator Movie, Archival Pigment Print, 30"x30"
- BAT.04 Bat Generator Prototype, Archival Pigment Print, 30"x40"

Sea Cucumber Methane Recovery

- SCMR.01a Coal Mine Methane Recovery Diagram, Archival Pigment Print, 22"x30"
- SCMR.01b Coal Mine Methane Recovery Diagram, Archival Pigment Print, 22"x30"
- SCMR.02 Symbiotic Bacteria, Archival Pigment Print, 22"x30"
- SCMR.03 Symbiotic Bacteria, Archival Pigment Print, 22"x30"
- SCMR.04 Deep Ocean Sea Cucumber Cuisine, Archival Pigment Print, 30"x40"



High voltage power lines in Dalian, China.

www.alternative2energy.com

Christine Chin
www.christinechin.net
cmchin@alumni.princeton.edu

www.alternative2energy.com